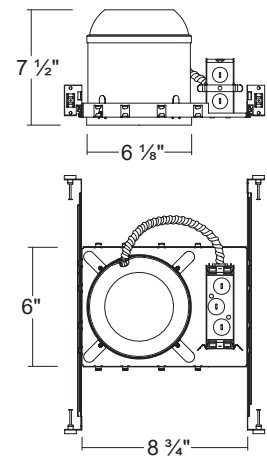


H600ICA

6" IC Air-Tight Incandescent New construction Housing (Max. 75W)



Dimensions



ORDERING INFORMATION

Model No.	Description
H600ICA	6" IC Air-Tight Incandescent New construction Housing (Max. 75W)

SPECIFICATION

Plaster Frame

- Galvanized steel construction. The housing can be removed from plaster frame to provide access to the junction box

Junction Box

- Listed for through branch circuit wiring
- Contains seven 7/8" knockouts
- New Cable Trap for easy installation of Romex Cable (US Patented / China Patented)

Bar Hanger

- Pre-installed Real nail easily installs in regular lumber, engineered lumber
- Bar Hangers are adjustable from 13-5/8" to 25" and can be repositioned 90 degree on plaster frame

Thermal Protector

- Self resetting thermal protector deactivates fixture if overheating occurs due to improper lamping or misapplied insulation.

Listings

- cULus Listed for Damp Location
- cULus Listed for Feed Through
- Certified under ASTM-E283 for Air tight construction

COMPATIBLE TRIMS

T605 Eyeball



- Incandescent
75W R / Par30

T601 Open Trim



- Incandescent
75W R / Par30

T691 Open Baffle Trim



- Incandescent
75W R / Par30

T630 Smooth



- Incandescent
75W R / Par30

T652 Wall Wash



- Incandescent
40W A19

T603 Stepped Baffle



- Incandescent
75W R / Par30

T613W White Cone Baffle
White Ring / AT



- Incandescent
90W R / Par30

T684 Regressed Eyeball
Baffle



- Incandescent
75W Par30

T692 Open Gimbal



- Incandescent
75W Par30

T645 Wall Wash Baffle



- Incandescent
75W BR / Par30